



**Emperor**

1220E

**PRODUCT FEATURES :**

- Light weight seat.
- Seat design engineered for comfort.
- Seat assembly meets AIS-023 Test Standards/Certified.
- Non metallic parts conform to FR spec IS 15061(Type 2).
- Rugged retractable armrest with ease of operation.
- Multiposition footrest for stress free travel comfort
- Injection molded parts for aesthetic appeal.
- Multiple optional features.
- Customer choices on Upholstery

**OPTIONAL ACCESSORIES (ADDITIONAL COST) :**

- 2P/3P seat belt – Static/Retractable
- Calf Support
- USB Charge - 2A/1A
- Two position rotary plastic pad

**STANDARD ACCESSORIES :**

- Back cover
- Bottle holder
- Magazine Pouch
- Aisle side cover
- Fixed footrest with rotary pad

**SEAT FITMENT GUIDELINES :**

- Use C-Section for seat mounting (25x75x25x2.5mm)
- Use M10x45(Grade-8.8) for mounting a seat leg with Torque - 50±2 NM

**WARRANTY POLICY:**

The product covers warranty for manufacturing defects, pre mature failures only. Product abuse & misuse does not warrant any free replacement.

**PERIODIC MAINTENANCE:**

Upholstery- Periodic cleaning for dust recommend with vacuum cleaner. Water, liquid cleaners and stain removers should not be used on seats. Dry clean upholstery covers separately.

**GAS SPRING:**

Check the reclining operation and function of mechanism on periodic basis. Replace gas spring by trained technician if leakage / failure observed.

**FIXED FOOTREST:**

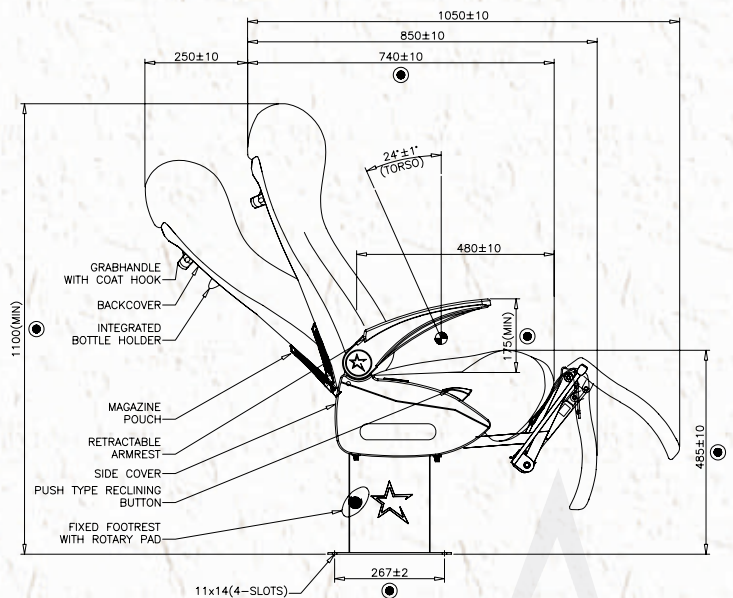
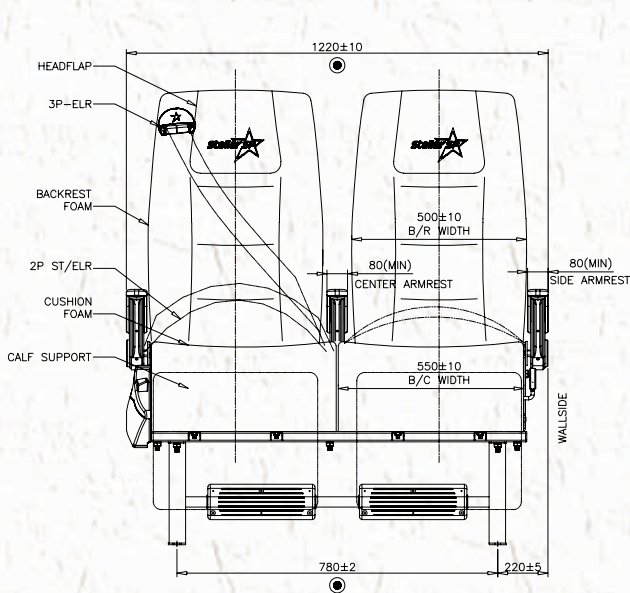
Check the free play for ease of use. Periodically set the recommended tightening torque of 30±2NM with 13mm flat/ring spanner

**TWO POSITION FOOTREST:**

Check the free play for ease of use. Periodically set the recommended tightening torque of 30±2NM with 5mm Allen key.

**ARMREST:**

Check the free play for ease of use. Periodically set the recommended tightening torque of 10±2NM with 10mm flat/ring spanner



Registered Office & Factory Address

**StellarSP Pvt. Ltd.**

Survey No.449, Anekal - Samandur Road, Samandur Village, Anekal Taluk, Bengaluru - 562106, Karnataka, India  
 Tel: Factory + 91 80 29909993, Sales: +91 80 22210010  
 Mobile: Marketing + 91 91410 45275, Sales +91 91410 45276  
 Engineering +91 91410 45280, Purchase +91 91410 45288  
 Email: [contact@stellarsp.com](mailto:contact@stellarsp.com), [sales@stellarsp.com](mailto:sales@stellarsp.com)  
[www.stellarsp.com](http://www.stellarsp.com)

**SEAT DIMENSIONAL SPECIFICATION**

Sl. No	Description	Seat Size	
		MM	INCH
1	1S	620±10	24
2	2S	1220±10	48
3	5S	-	-